

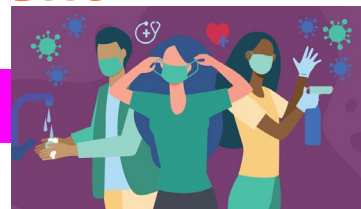
# CTECH Health and Social Care Diploma, 2 A Level Equivalent



## Unit 5: Infection control

### Coursework

Assessed through: P1, P2, P3, P4, P5, P6, P7, P8, P9, P10, M1, M2, M3 D1 and D2.



## Unit 23: Sociology for health and social care

### Coursework

Assessed through: P1, P2, P3, P4, P5, P6, M1, M2, and D1.



## UNIT 17: Supporting individuals with Mental Health problems

Assessed through: P1, P2, P3, P4, , M1, M2, and D1.

### Coursework



YEAR 13

## UNIT 12: Promote positive behaviour

### Coursework

Assessed through: P1, P2, P3, P4, P5, M1, M2, M3 and D1.

Studying Health and Social care can lead to a vast range of careers- use the careers PPT on the website to explore further!



Health and Social Care links well with:  
Psychology  
Law  
Sociology  
Applied science  
Biology



## Unit 6: Personalisation and person-centred care

End of section assessments for L01, L02, L03 and L04



YEAR 12

You will study these units alongside the units for the extended Certificate. 12 Units in total 😊

End of section assessments for L01, L02, L03, L04 and L05.

**External Exam**  
**January of year 12**



## Unit 7: Safeguarding

**External Exam**  
**January of year 12**

<https://www.ocr.org.uk/qualifications/cambridge-technical/health-and-social-care/>

